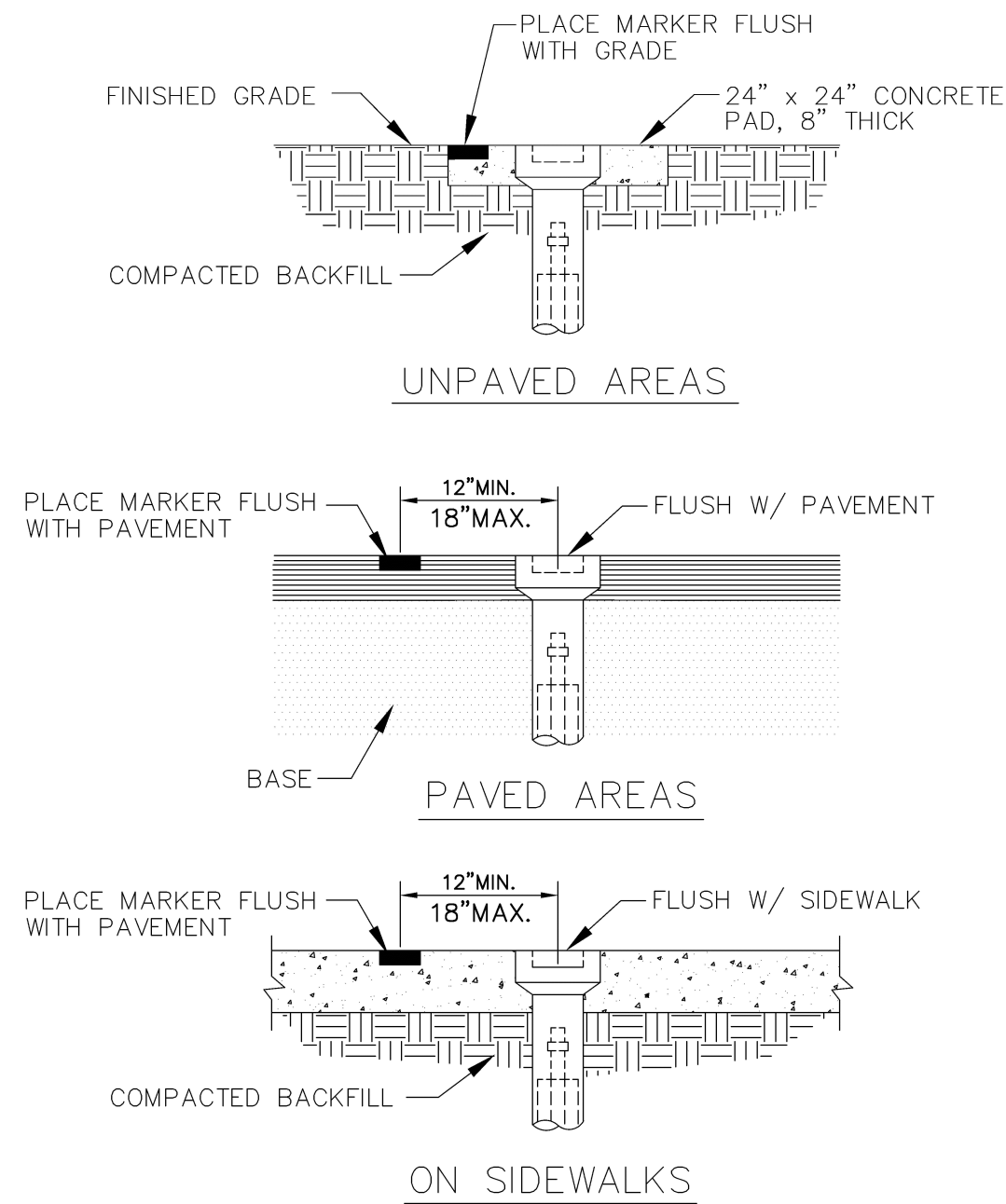


SAMPLE POINT (MAIN)

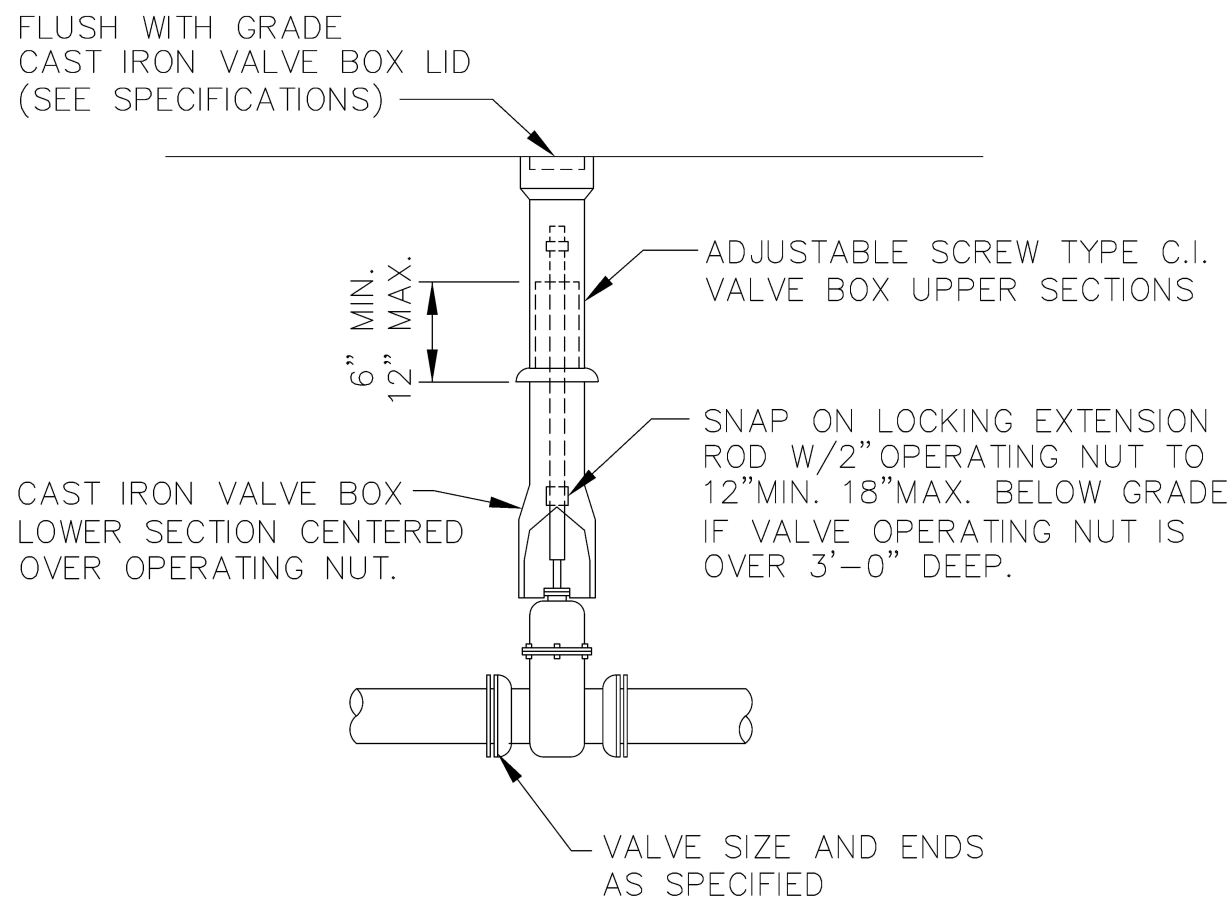
ALL D.I.P. TO BE PAINTED
BLUE ON TOP HALF OF PIPE.

ENGINEERING STANDARDS 2022			
REVISIONS	BY	DATE	ENGINEERING DIVISION
	S.S.	04-2005	CITY OF POMPAÑO BEACH
SCALE: N.T.S.		DATE: MAY 2022 DWG. NO.	SAMPLE POINT (MAIN) 100-1



VALVE BOX SETTINGS

ENGINEERING STANDARDS 2022			
REVISIONS	BY	DATE	ENGINEERING DIVISION
	S.S.	04-2005	CITY OF POMPAÑO BEACH
SCALE: N.T.S.		DATE: MAY 2022 DWG. NO.	VALVE BOX SETTINGS 102-1

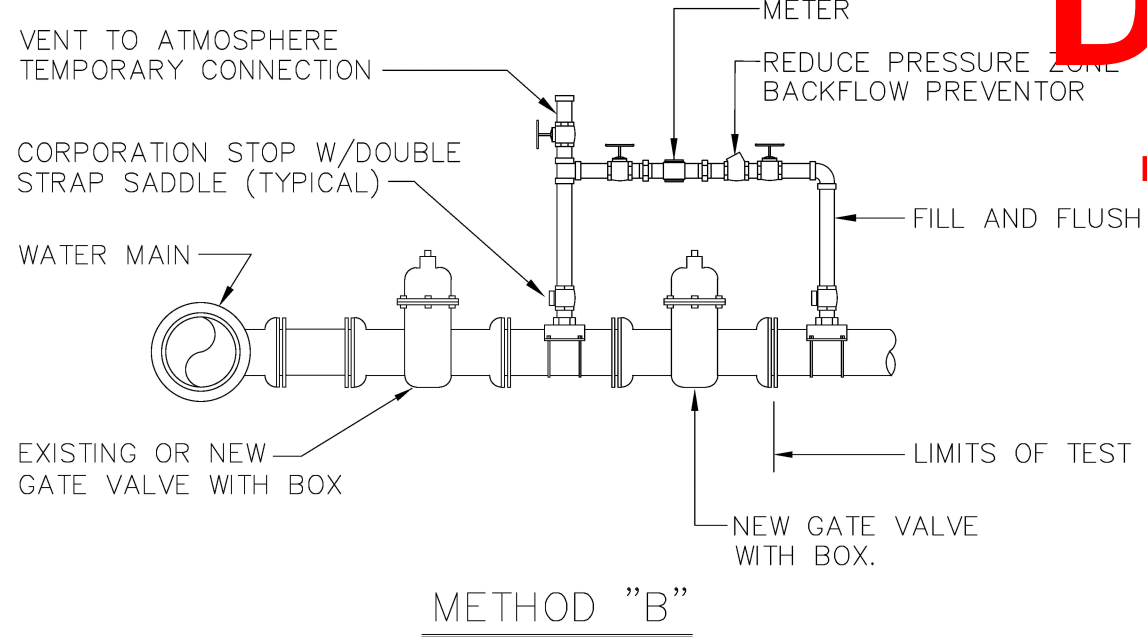


GATE OR PLUG VALVE SETTING

USE MEGALUGS AT ALL PIPE JOINTS

ALL D.I.P. TO BE PAINTED
BLUE ON TOP HALF OF PIPE.

ENGINEERING STANDARDS 2022			
REVISIONS	BY	DATE	ENGINEERING DIVISION
	S.S.	04-2005	CITY OF POMPAÑO BEACH
	T.W.	11-2007	
SCALE: N.T.S.		DATE: MAY 2022 DWG. NO.	GATE OR PLUG VALVE SETTINGS 103-1



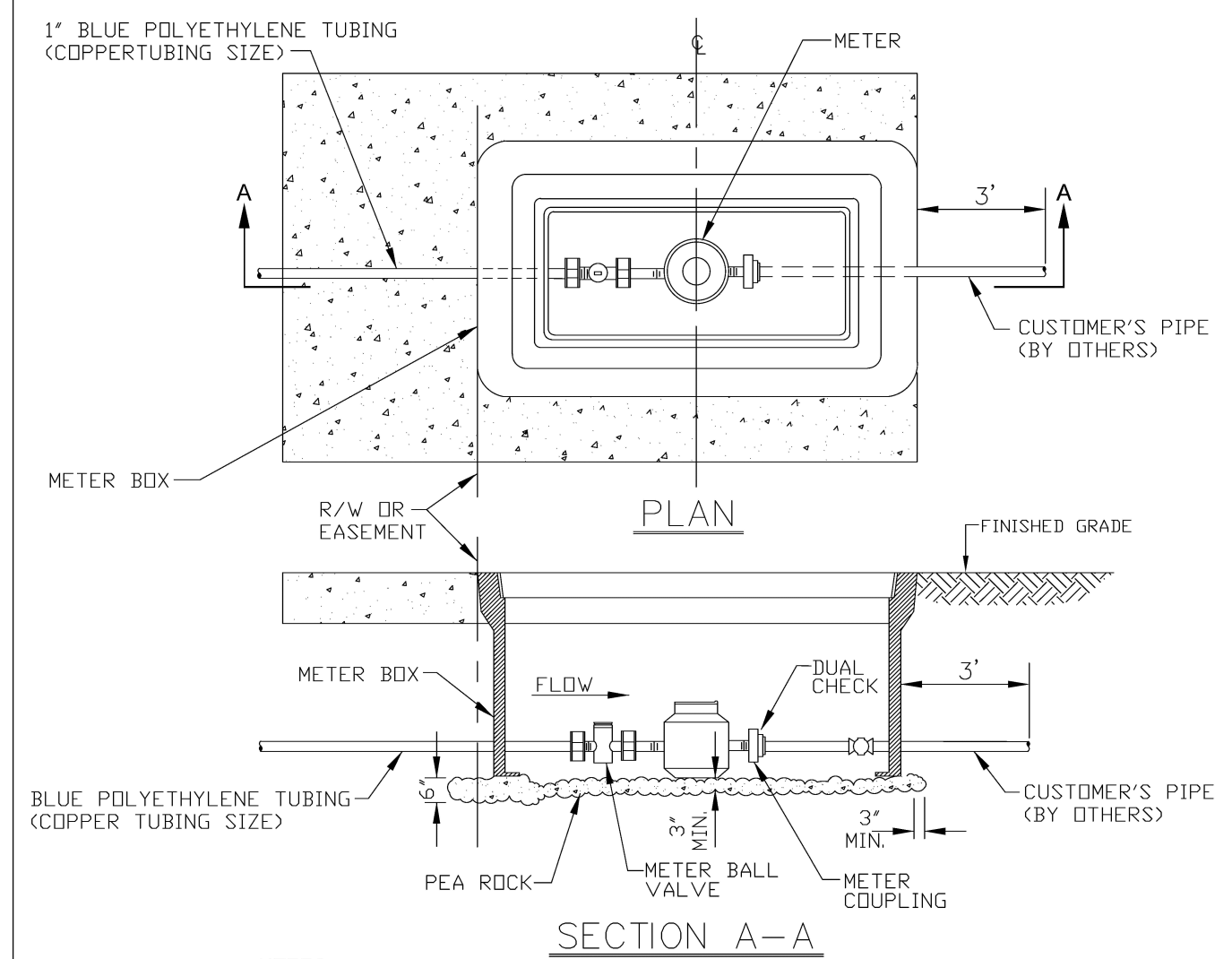
NOTES:

1. WATER MAIN TO BE PRESSURE TESTED AND DISINFECTED ACCORDING TO BROWARD COUNTY PUBLIC HEALTH UNIT REGULATIONS, AWWA, AND MUNICIPAL SPECIFICATIONS IN EFFECT.
2. BACTERIOLOGICAL TESTS ARE TO BE PERFORMED BY THE CONTRACTOR AND AN APPROVED TESTING LABORATORY.
3. REMOVE TEMPORARY CONNECTION AT SADDLE ON NEW MAINS AFTER FILLING AND FLUSHING HAS BEEN COMPLETED AND REPLACE WITH BRASS PLUG
4. PROVIDE ALL NECESSARY THRUST BLOCKS OR OTHER RESTRAINTS.
5. FILLING AND FLUSHING LOCATIONS SHALL BE COORDINATED BY THE CONTRACTOR, ENGINEER, AND CITY.
6. VENT TO ATMOSPHERE SHALL REMAIN OPEN DURING ALL PHASES OF PRESSURE TESTING.
7. AFTER COMPLETION FILL AND FLUSH CONNECTION
8. USE MEGALUGS AT ALL PIPE JOINTS

FILLING AND FLUSHING CONNECTION

ALL D.I.P. TO BE PAINTED
BLUE ON TOP HALF OF PIPE.

ENGINEERING STANDARDS 2022			
REVISIONS	BY	DATE	ENGINEERING DIVISION
	S.S.	04-2005	CITY OF POMPAÑO BEACH
	T.W.	11-2007	
	S.S.	01-2012	
SCALE: N.T.S.		DATE: MAY 2022 DWG. NO.	FILLING / FLUSHING CONNECTION 104-1



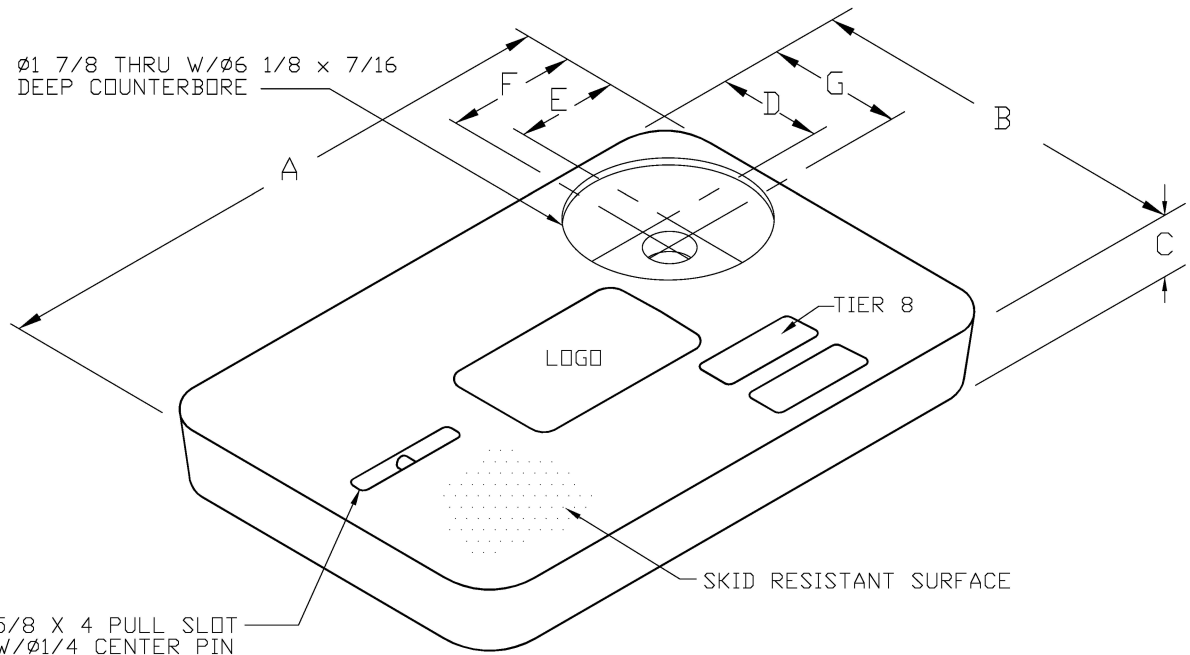
NOTES:

1. ALL METERS WILL BE SUPPLIED AND INSTALLED BY CDPB UTILITIES. METER HAS IRON PIPE THREAD MALE CONNECTION ON EACH END.
2. METER SHALL BE CENTERED IN BOX.
3. DUAL CHECK IS SAME SIZE AS CUSTOMER'S SERVICE LINE.

METER SIZE	LAYING LENGTH (IN)	HEIGHT (IN)
3/8"	7.5	4.56
1"	10.75	5.75

METER BOX INSTALLATION

ENGINEERING STANDARDS 2022			
REVISIONS	BY	DATE	ENGINEERING DIVISION
	S.S.	11-2012	CITY OF POMPAÑO BEACH
SCALE: N.T.S.		DATE: JAN. 2022 DWG. NO.	METER BOX INSTALLATION FOR 5/8" AND 1" METERS 105-2



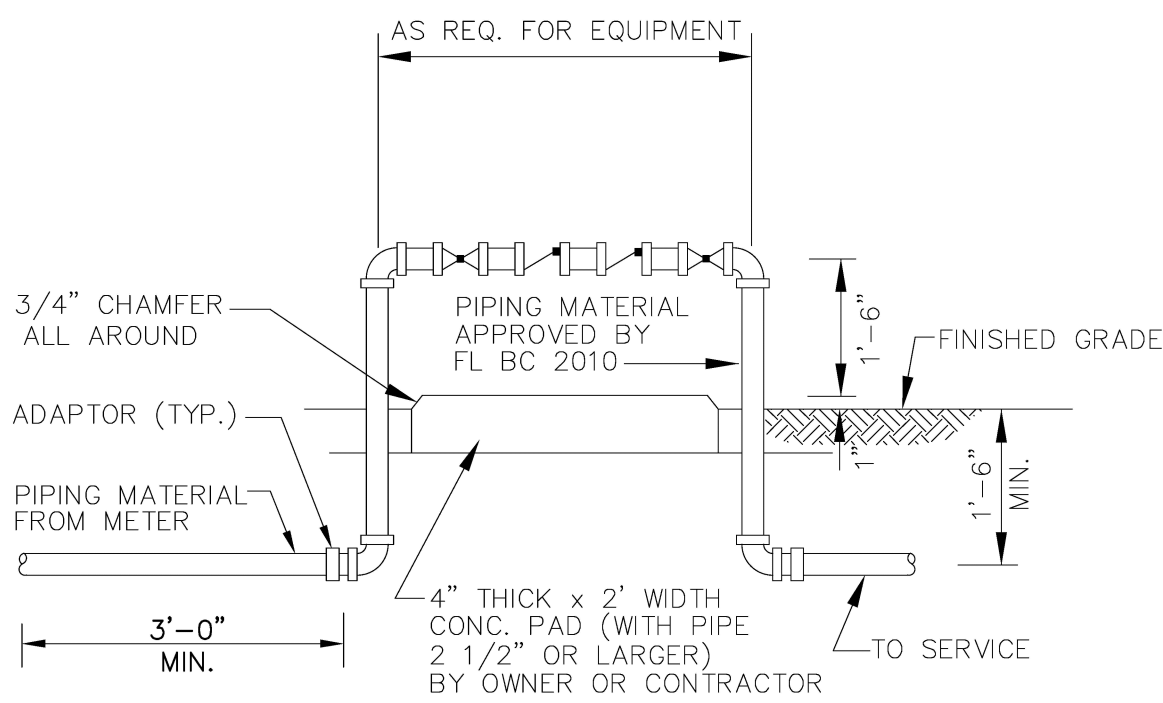
METER BOX COVER DIMENSIONS (IN)							
METER SIZE	A	B	C	D	E	F	G
1"	18 1/8"	11 1/4"	1 3/4"	3 3/4"	4"	4 9/16"	4 5/16"
1 1/2"	23 1/4"	13 3/4"	2"	4"	4"	4 9/16"	4 9/16"
2"	30 1/2"	17 1/2"	2"	4"	4"	4 9/16"	4 9/16"

NOTES

1. CUSTOMER IS CITY OF POMPAÑO BEACH FLORIDA. LOGO TO BE SPECIFIED. CITY OF POMPAÑO BEACH POTABLE WATER
2. FITS NEPTUNE R450 ANTENNA
3. THIS COVER IS RATED FOR A STATIC DESIGN LOAD OF 8,000 LBS. (35,548 N) OVER A 10 (254) X 10 (254) AREA AND MUST PASS A MINIMUM STATIC TEST LOAD OF 12,000 LBS (53,376 N).
4. METER BOX COVER SHOULD BE RATED FOR TRAFFIC CONDITION AS DETERMINED BY ENGINEER OF RECORD.

POTABLE WATER METER BOX COVER

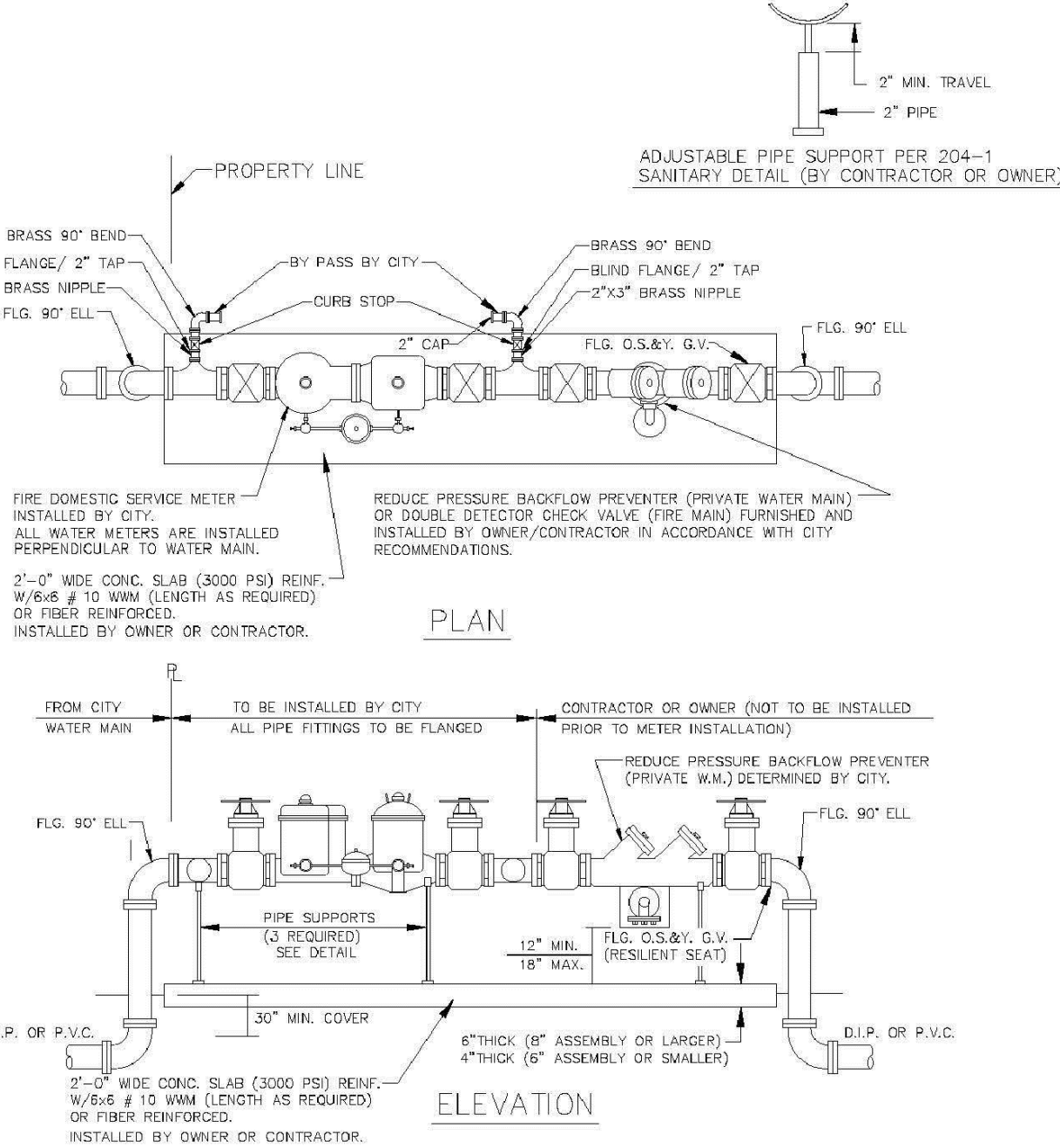
ENGINEERING STANDARDS 2022			
REVISIONS	BY	DATE	ENGINEERING DIVISION
	S.S.	11-2012	CITY OF POMPAÑO BEACH
SCALE: N.T.S.		DATE: JAN. 2022 DWG. NO.	TYPICAL METER BOX COVER 105-3



BACKFLOW PREVENTER

USE MEGALUGS AT ALL PIPE JOINTS 3" AND LARGER
PLEASE SEE METER INSTALL DIMENSION LIST ON STANDARD NO. 106-4
SMALL UNITS UNI-STRUT SUPPORT

ENGINEERING STANDARDS 2022			
REVISIONS	BY	DATE	ENGINEERING DIVISION
	S.S.	04-2008	CITY OF POMPAÑO BEACH
	S.S.	03-2009	
	S.S.	11-2012	
	S.S.	01-2013	
SCALE: N.T.S.		DATE: MAY 2022 DWG. NO.	BACKFLOW PREVENTER 106-1



NOTES

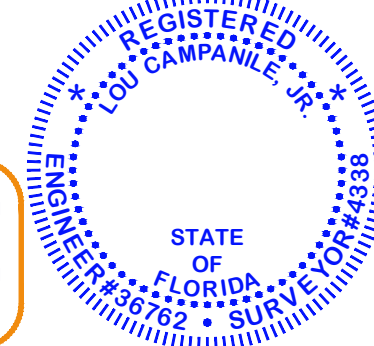
1. THE BACKFLOW PREVENTOR FOR THE BY-PASS SHALL BE DDCV OR RPZ.
2. PLEASE NOTE THAT WATER METERS 3" AND LARGER ARE SUBJECT TO AN APPROXIMATE ORDER LEAD TIME OF 60 TO 75 DAYS AFTER FULL PAYMENT. PLEASE CONTACT CUSTOMER SERVICE AT 954-786-4637 TO ARRANGE FOR METER PROCUREMENT AND INSTALLATION.
3. USE MEGALUGS AT ALL PIPE JOINTS
4. PLEASE SEE METER INSTALL DIMENSION LIST ON STANDARD NO. 106-4

MASTER METER AND BACKFLOW DEVICE DETAILS

ENGINEERING STANDARDS 2022			
REVISIONS	BY	DATE	ENGINEERING DIVISION
	S.S.	05-2011	CITY OF POMPAÑO BEACH
	S.S.	11-2012	
	S.S.	12-2013	
	S.S.	11-2016	
SCALE: N.T.S.		DATE: MAY 2022 DWG. NO.	MASTER METER AND BACKFLOW DEVICE 106-2

DRC

PZ24-12000023
07/16/2025



CAMPANILE & ASSOCIATES, INC.
ENGINEERS PLANNERS SURVEYORS
6420 MAHI DRIVE
CORAL GABLES, FLORIDA 33158-1841
TEL: (305) 971-1988
LB 1678

5/14/25
Lou Campanile, Jr.
Professional Engineer No. 38792
Professional Surveyor No. 4338
State of Florida

for
RJS ARCHITECTS, INC.

ELIAS APARTMENT BUILDING
216 SE 23 AVENUE
POMPAÑO BEACH, FLORIDA 33062-5304
POMPAÑO BEACH WATER DETAILS

PROJECT NO. 5391

DATE 10/9/24

REVISIONS

DRAWING

WS-3

SHEET

3 OF 10